

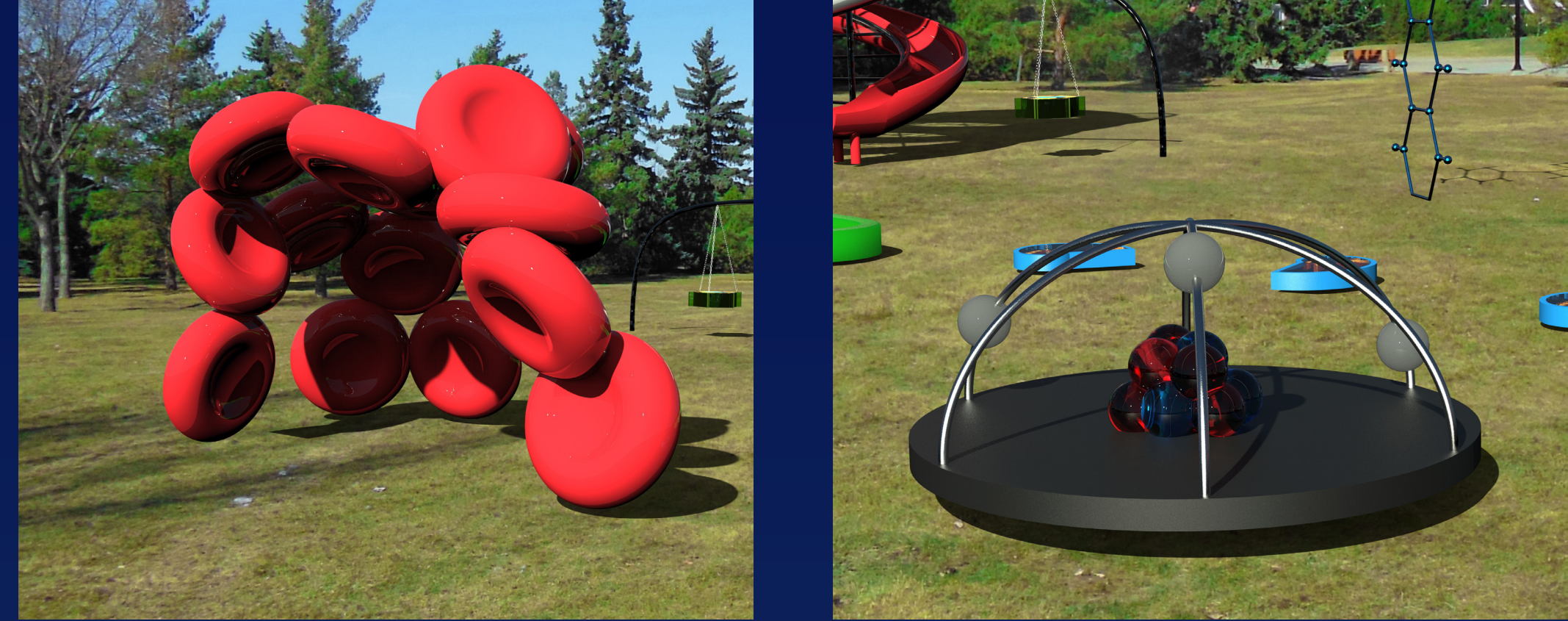
Small Science

A PlayGround Concept by
Katherine Schmaltz

The inspiration for the playground I have designed is SCIENCE and The Study of Life. I wanted to provide an opportunity for physical activity and learning. The target demographic is children aged 6-12. During these ages, children are able to enjoy many different activities and are at an optimal age for acquiring new knowledge.

The location of the playground will be outdoors at Coronation park in Edmonton. I chose this location because this parcel of land has the Telus World of Science Edmonton (TWOSE) on it. The Telus World of Science is a broad-based science center operated by the Edmonton Space & Science Foundation. It offers many programs and camps for science enthusiasts in the age range of 6-14. There is an outdoor observatory, however, there is no outdoor play area except for open fields. The playground will be developed so that there is a learning adventure available for children who are not able to access the TWOSE facility. This broad accessibility is a key focus for this project.

The playground will include enlarged entities of microscopic science, with a focus on Life. The play structures will imitate DNA, atoms, molecules, etc. Each structure will offer a new learning experience and could also allow for a new guided experience by the Telus World of Science. A TWOSE employee could guide children (weather permitting) through the playground while instructing participants on what each play structure represents and what it does.



25 ft.

20 ft.

15 ft.

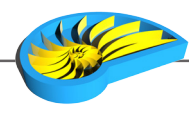
10 ft.

5 ft.

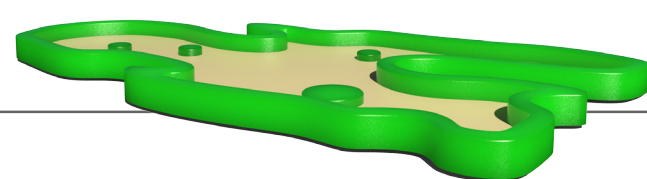
Height of
Equipment



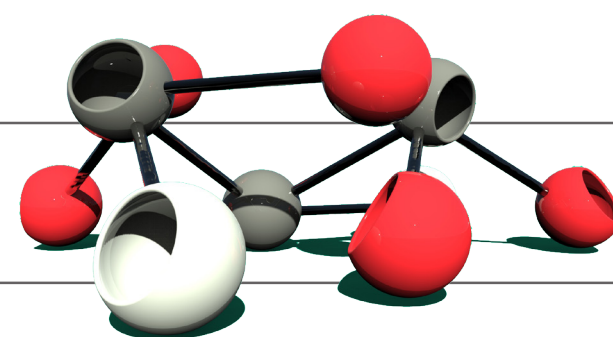
DNA
Helix Slide



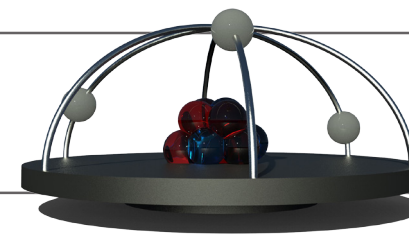
Golden Ratio
Shell
StePPinG Stone



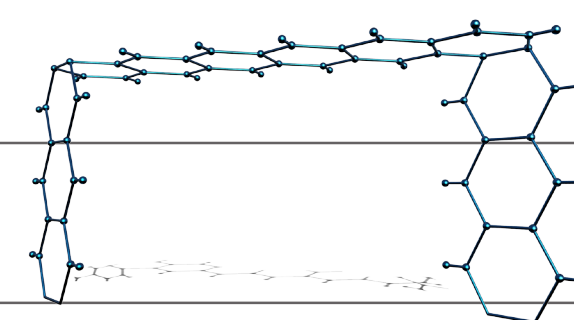
Amoeba
Sandbox



Molecule
ClimbinG
Structure



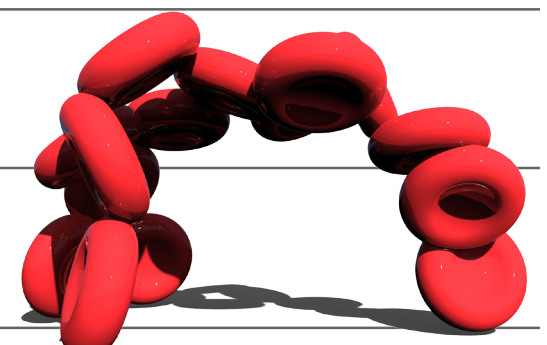
Atom
Carousel



Molecule
MonkeY Bars



Plant Cell
SwinG



Red Blood Cell
Shelter

